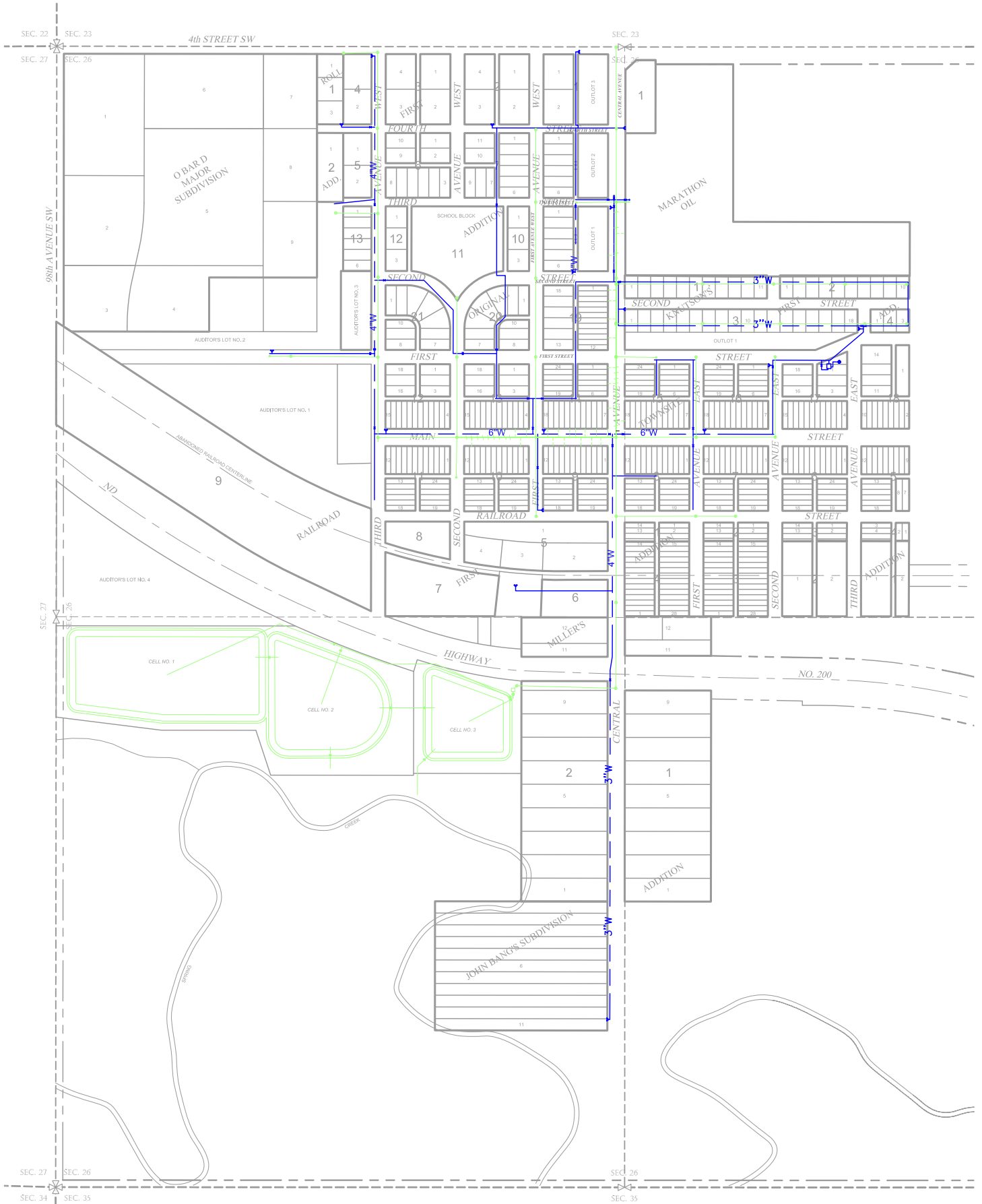


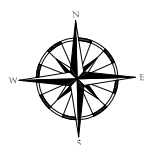
CITY OF DUNN CENTER UTILITIES MAP

A MAP/EXHIBIT OF THE EXISTING MUNICIPAL WATER AND SEWER FOR THE CITY OF DUNN CENTER LOCATED IN SECTION 26, TOWNSHIP 145 NORTH, RANGE 94 WEST, DUNN COUNTY, NORTH DAKOTA.

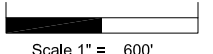


Map Legend

—	HWY 200 R.O.W.	⊗	Section
- - -	HWY 200 Centerline	⊗	Section Corner
- - -	Section Line	— 8" S —	Sewer Main
—	Boundary Line of Area of Project	— 8" W —	Water Main



BASIS OF BEARING
Geodetic North @
NGS OPUS Position
Lat N 47d 21' 11.7858"
Long. W 102d 37' 48.12351"



Scale 1" = 600'

M:\101619\Drawings\Figures\CODC Utilities Map_8.5x14.dwg



12 W. Main, Suite B
Dunn Center, ND 58626
701.347.1662 Office
www.circ-h.com



DRAWN BY: CPR
DATE: 06/29/2011
PROJECT NO. 111619
FILE NAME: CITY-UTILITIES-MAP

DUNN CENTER
— NORTH DAKOTA —